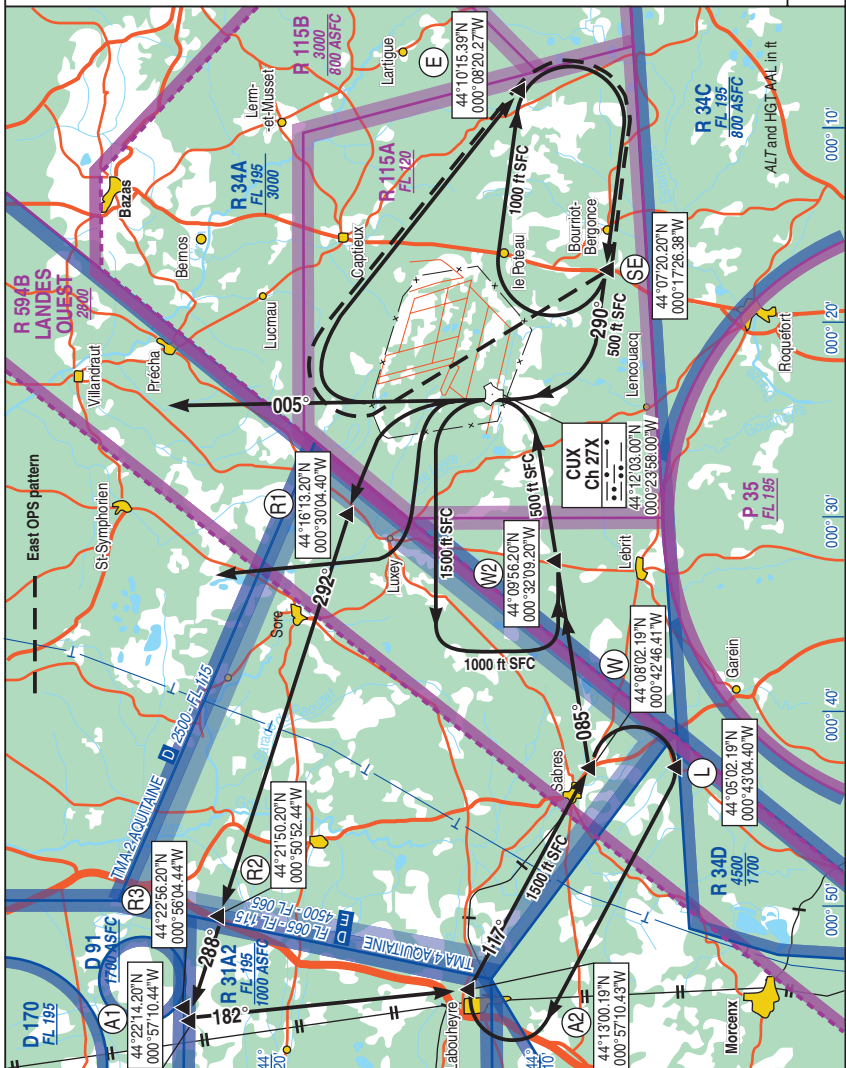


26 AUG 2010

SAFARI : 369.275 (P) 244.350 (S) 277.9
 143.975 (P) 142.575 (S)
 MARCO : 277.375 (P)

VAR
 2°W
 (00)



ROUTES

CHG : FREQ.

01 CAPTIEUX ©

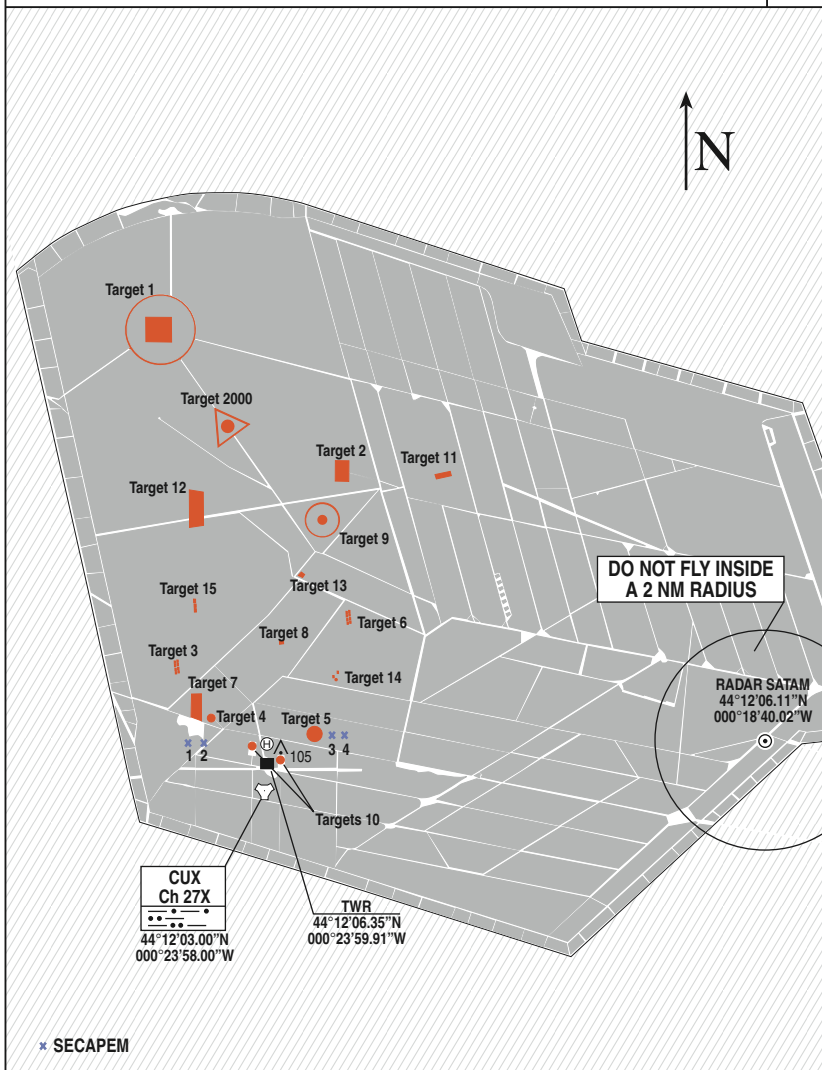
FIRE RANGES

30 AUG 2007

02 CAPTIEUX AIR TO GROUND TARGETS

SAFARI : 369.275 (P) 244.350 (S) 277.900
 143.975 (P) 142.575 (S)
 MARCO : 255.750 (P) 305.550(S) 353.550

VAR
 2°W
 (00)



INSTRUCTIONS

Slot reservation is mandatory for use of CAPTIEUX firing range .
 Aircrew must have a very high knowledge of CPUCT document.
 Use SAFARI secondary frequency (244.350 Mhz). For initial contact

CIBLES	WGS 84 CENTÉSIMALES	WGS 72 CENTÉSIMALES	ALT (ft)
Target n° 1	N 44° 15'.461 W 00° 24'.949	N 44° 15'.459 W 00° 24'.959	350'
Target n° 2	N 44° 14'.338 W 00° 23'.071	N 44° 14'.336 W 00° 23'.080	372'
Target n° 3	N 44° 12'.885 W 00° 24'.889	N 44° 12'.883 W 00° 24'.899	366'
Target n° 4	N 44° 12'.509 W 00° 24'.556	N 44° 12'.507 W 00° 24'.565	374'
Target n° 5	N 44° 12'.358 W 00° 23'.428	N 44° 12'.357 W 00° 23'.437	386'
Target n° 6	N 44° 13'.031 W 00° 23'.199	N 44° 13'.029 W 00° 23'.208	382'
Target n° 7	N 44° 12'.577 W 00° 24'.714	N 44° 12'.575 W 00° 24'.723	370'
Target n° 8	N44° 12'.948 W 00° 23'.704	N 44° 12'.946 W 00° 23'.713	378'
Target n° 9 Center	N 44° 13'.985 W 00° 23'.303	N 44° 13'.983 W 00° 23'.308	374'
Target n° 9 North	N 44° 14'.036 W 00° 23'.289	N 44° 14'.034 W 00° 23'.298	374'
Target n° 9 South	N 44° 13'.960 W 00° 23'.301	N 44° 13'.957 W 00° 23'.308	374'
Target n° 10 Left	N 44° 12'.282 W 00° 24'.135	N 44° 12'.280 W 00° 24'.144	379'
Target n° 10 Right	N 44° 12'.163 W 00° 23'.843	N 44° 12'.161 W 00° 23'.853	382'
Target n° 11	N 44° 14'.281 W 00° 22'.006	N 44° 14'.279 W 00° 22'.015	384'
Target n° 12	N 44°14'.098 W 00°24'.630	N 44° 14'.096 W 00° 24'.639	357'

INSTRUCTIONS

Slot reservation is mandatory for use of CAPTIEUX firing range .

Aircrew must have a very high knowledge of CPUCT document.

Use SAFARI secondary frequency (244.350 Mhz). For initial contact

CIBLES	WGS 84 CENTÉSIMALES	WGS 72 CENTÉSIMALES	ALT (ft)
Target n° 13	N 44° 13'.563 W 00° 23'.550	N 44° 13'.561 W 00° 23'.559	370'
Target n° 14 Ref	N 44° 12'.769 W 00° 23'.272	N 44° 12'.767 W 00° 23'.281	384'
Target n° 14 North East	N 44° 12'.856 W 00° 23'.197	N 44° 12'.854 W 00° 23'.206	382'
Target n° 14 North West	N 44° 12'.809 W 00° 23'.324	N 44° 12'.807 W 00° 23'.333	382'
Target n° 15	N 44° 13'.362 W 00° 24'.682	N 44° 13'.361 W 00° 24'.691	364'
Target n° 15 bis	N 44° 13'.565 W 00° 24'.427	N 44° 13'.564 W 00° 24'.520	364'
Target n° 2000	N 44° 14'.723 W 00° 24'.268	N 44° 14'.715 W 00° 24'.273	364'